

NEW FORM OF BLOOD CELL (PHYSICAL) ... "SAF-FIRE" CELLS (SFC)... FIRST PHYSICAL SIGNS OF THE NEW "KADMON" RACE IN NORMAL HUMAN BLOOD

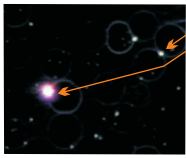
A LIVE-BLOOD ANALYSIS DONE ON 24 JULY, 2011, IN CRESTONE, COLORADO REVEALED A NEW CELL NEVER SEEN BEFORE BY THE HIGHLY EXPERIENCED ANALYST, HE HAS NO EXPLANATION. THE "SAF-FIRE CELLS" (SFC) WERE SEEN TO "SWIM" DIRECTLY TO EACH OTHER, SEVERAL MEETING, THEN TO RED BLOOD CELLS (RBC) WHERE THEY TOUCHED THEM AND APPEARED TO COMMUNICATE. SEVERAL FORMS OF NEW CELLS WERE SEEN. THEY ARE SMALL, VERY BRIGHT, AND APPEAR TO BE SENTIENT. THEY ALSO "COMMUNICATE" WITH THE VERY SPECIAL, NORMAL, "MUCOR RACEMOSUS FRESEN" CELLS FOUND IN ALL CELLS OF MAMMALS (CAN NOT BE KILLED, VITAL TO CELL LIFE). THEY ALSO COMMUNICATE WITH DEAD RBC AS WELL AS THE LIVING.

(AT THIS TIME OF WRITING ... OCT 22, 2011... 11 KNOWN PEOPLE HAVE THE CELLS, ALL ASSOCIATED WITH RESHEL WORK EXCEPT ONE FAMILY MEMBER WHO ALSO HAS THE FIRST WHITE BLOOD CELL VARIATION SEEN.)

SINCE SFB HAS BEEN PREDICTED BY INNERPLANES SOURCES AND NOTHING IS FOUND IN MEDICAL MATERIAL WE REFERRED THE QUESTION TO THOTHORRA KHANDR ("THOTH HERMES") TRANSLATED BY MAIA NARTOOMID. SOME OF HIS ANSWERS ARE ADDED BELOW.

(Q) What is occurring with the manifestation of the "blue stars" in the blood; what are they and why are they doing?

THR: The blue stars indicate that you are in first stages of transforming the blood into "pure gem" frequency. You are acting as a host for the planet (one of the surrogates for "blue blood" transfusion into the human spectrum).



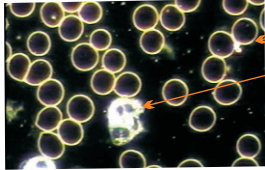
- 1 SFC WITH 2 DEAD RBC
- 2 SFC WITH A DEAD RBC (THE FAINT CIRCLE)

(Q) A number of #1 forms were seen to be touching Red Blood cells (RBCs), some were inside the cells. However many were interacting with *dead* RBCs... we can see these dead RBCs as "ghost" or faded circles. Why the attention given to dead cells, is there another, etheric, level of dead cells? Request explanation please.

THR: The "dead" cells still contain a signature. This is information to the Gem workers...they draw from it to create the new blood.

(Q) In a few cases there were several #1 style cells all interacting with a single RBC, those seen were dead RBCs. Why several per single RBC?

THR: Different information requires different types of "workers" to assimilate it.

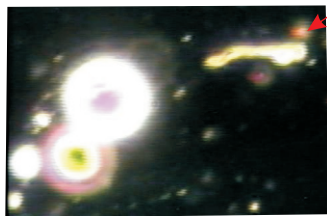
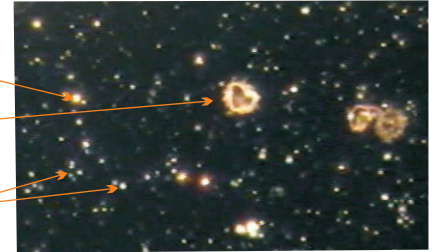


THIS SHOWS NORMAL RBC (WHITE CIRCLES) WITH 2 SFC LINKED WITH 2 RBC.

THIS IS A NORMAL WHITE CELL HOWEVER RECENTLY A NEW WHITE CELL HAS APPEARED. IT IS MUCH LIKE A NORMAL CELL BUT IS MADE UP OF SMALL EQUAL SIZED BRIGHT WHITE SPHERES AND HAS INNER DARK AREAS SIMILAR TO THE NORMAL CELL BUT MORE REGULAR.

AN SFC, MANY IN THIS PICTURE
THIS IS ANOTHER FORM OF NEW CELL

THE SMALL SPECKS ARE NUTRIENTS IN THE BLOOD AND OTHER SLIGHTLY LARGER SPECKS (SMALLER THAN THE SFB) ARE "MUCOR RACEMOSUS FRESEN" FOUND IN EACH CELL (VITAL TO IT'S LIFE) AND ALSO FREE IN THE BLOOD... SFB "TALK" WITH THEM ALSO.



SFC

AN SFC OF THIS TYPE MAY HOLD STILL OR MOVE VERY RAPIDLY, OFTEN DIRECTLY TO CONNECT WITH OTHERS OR WITH NORMAL CELLS WHERE THEY TOUCH THE CELL AND APPEAR TO BE COMMUNICATING.

"MUCOR RACEMOSUS FRESEN": MICROORGANISMS, INDESTRUCTIBLE, ...EVERY MAMMAL CELL MUST HAVE ONE OR DIE, MANY IN THE FLUID. THE SFB'S HAVE BEEN OBSERVED MUTUALLY ATTRACTED BY THE MRF/S ...BOTH ARE SENTIENT.

SLIGHTLY ENLARGED

THESE NEW CELL TYPES WERE OBSERVED TO OPEN AND CLOSE MUCH AS A CLAM WOULD, ONE END IS OPEN.

UNUSUAL MATRIX OF DIFFERENT SFC'S, SO FAR SEEN IN THREE PERSONS OF THE 11 PERSONS TO DATE.

THR: Creation of "phantom" DNA strands... that is the mimicking of "new" DNA... it is in the current modality not useable as true DNA creational patterns but, when "contact" is made... the bridging takes place... then such patterns would communicate directly to the DNA and build within it.

These are simply related families of "new energy" blood forming in the body. To try to separate and tell you about each stage would take pages, be extremely complex and is really not within your need to know. Know this...as "families" or related new blood energies form, so they work together to create more related families. The question which might loom for you is why you are not outwardly transforming into a "Pure Gem Being" with all this blood activity occurring.

The blood energy-effects you are seeing are not able to make the circuit leap into the wave form of the bio-system until other changes occur in the human experience of the soul-incarnate. The energy cells will pool and begin to feed on themselves keeping their level of replication at a certain volume UNTIL that connection is made and the "leap" can take place. Such a leap does not come from the physical but from the spiritual... to which the physical then responds ...inducing the blood energy to leap into the wave form.

As more and more human beings create the GEM Blood so they are also building communicating at the level of the blood chemistry. This communication increases the spiritual unity of those with the Gem Blood and thus aids in the individual spiritualization of the individual soul-body system.

(THR addresses a full blown Pure Gem system) The Pure Gem M-Stra will be fully active in the system and have multi-faceted crystalline "ports" which allow (and draw to it) docking for a full range of full blown Gem crystal micro-chips. This is at the core of the multi-dimensionality capabilities of the true Pure Gem Body within it's New EarthStar environment.

(In referring to a specific formation seen in Bill's blood of the blue particles) this formation is the "tracking" phase, where each energy-spark (that in a full blown Pure Gem Body would be a "micro-chip") is being attracted to and receiving information from the knowledge-based "cell." However in the current physical environment, all these functions are operating at phantom level - until the charge is given from the wave form of the body (and it's whole earth system) to make the leap and bond.

(Q) When and how did they manifest?

THR: gradually through the work with the New Ark dynamics. For the purpose as stated above.

(Q) What are the larger bright blue-light forms?

THR: Host beings who organize and distribute the new "gem" blood cells.

(Q) How does this phenomenon affect the ANGELIKA work?

THR: It is a product of this work. There are others in the group who have this blood process beginning now. Some not yet visible and others would be a peak times in the process of blood transformation. However Wm is at the crest, the peak of the whole wave of the group as it is through him (his willing presence) that the process is currently being sustained.

(Q) Would they be M-Stra molecules forming cells and is this a form of Saf-Fire blood??

THR: Yes to both points.

(Q) Are others in the Planet doing the same?

THR: Yes, but at this time not many (not just within your group).