

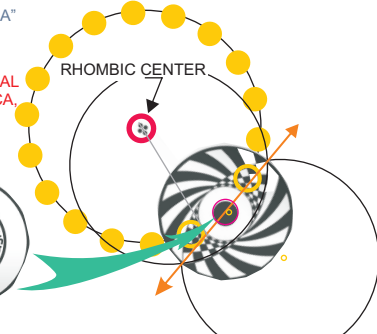
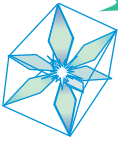
**THE "WINGED ARCHIA":
"T-KH-MUT" HEART COHERENCY SYSTEM**

HALLS OF AMENTI: "OSIRIS-REM-KEBKET" SYSTEM AS THE CROP FORMATIONS CREATED THE PYRIETHUM GRID IN 2010.

COMPLEMENTARY SYSTEMS:

1. 9 LIGHT BODIES
2. LIVING-ARK MATRIX
3. STAR-BIRD "FALCON OF ANDORA"
4. DIADEM MATRIX.

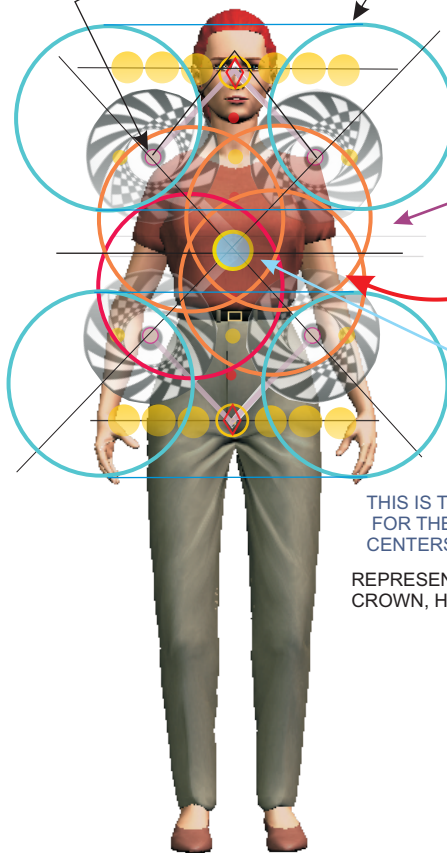
"OSIRIS-REM-NEBKET" TEMPLATE HEART INSERTS USING TWO CENTRAL CROP FORMATIONS: "WHORL, VESICA, EYE, BLUE STAR, ETC."



ABBREVIATED VIEW TO SHOW POSITON ON THE HUMAN RELATIVE TO SHOULDERS AND HIPS.

SPINS TO FORM TORUSES WITH PROGRAMABLE SPHERES IN ANY NUMBER

THERE ARE 4 OF THESE POLES: 2 IN FRONT AND 2 IN BACK:

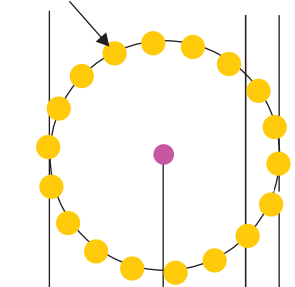


5 RINGS AROUND THE T-KH-MUT FORM A RESONANCE WITH THE LYRAN CELESTIAL ULTRA-TERRESTRIALS.

INTENTION: FOR THE CENTRAL ARK TO FORM THE KA'TIIM SPHERE IN THE CENTRAL ATOMA AREA, OR "VAULT OF THE CORPUS": CORE OR BODY OF RESOLUTION. (APHATHETA EYE OF GOD.)

THIS IS THE PURE-SYMBOL FOR THE "CENTER OF ALL CENTERS", HEART COHENERCY.

REPRESENTS THE DIADEM CROWN, HEAD BANDS AND TUBES



RESHEL GEOMETRY STUDY:

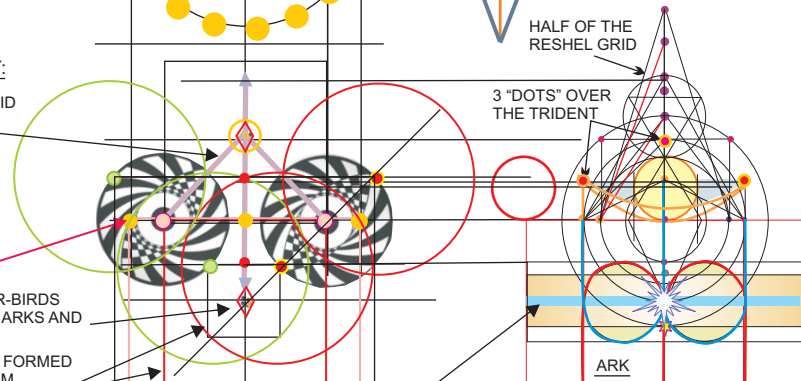
STAR-BIRD HORIZON PORTAL GRID IN THE HEAD-ARK

SIMILAR, REVERSED IN THE HARA (LOWER) ARK

18-POLE (TOR TARUM) RING ON THE ARK COVER, CODES THE STAR-BIRD "WINGS."

CENTRAL ARK ATOMA: BOTH STAR-BIRDS LINK WITH THE CENTERS OF THE ARKS AND ATOMA.

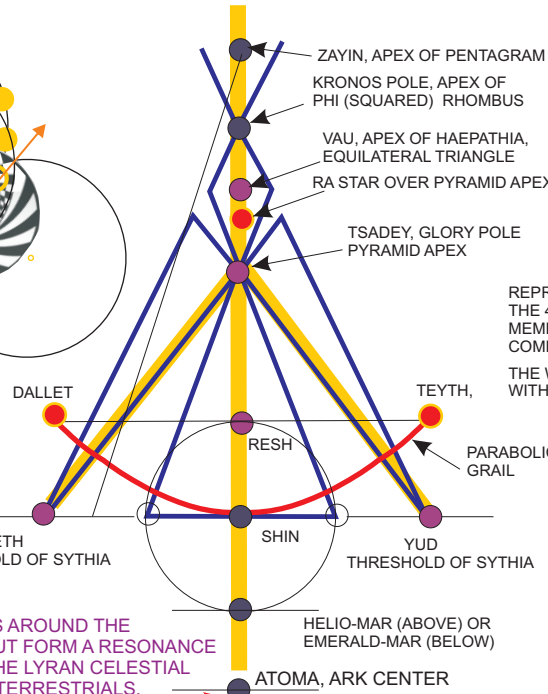
NOTE SPECIAL 3-ARK HARMONIC FORMED BY THE T-KH-MUT ADD-ON SYSTEM.



HORIZON OF THOTH INCLUDES THE BLUE PLANE OF GRACE

THOTH'S TRIDENTS SPIN TO CREATE A TORUS AROUND THE ATOMA

(This system): "T-KH-MUT: To install and connect to Universal grid. The "T" TAO is the KEY to this instalation. the KH - the keyhole and the MUT the contact node / activator. Regarding "Heart Coherency" there is the same system inside the actual physical heart, duplicated in the heart ATOMA. There are fine filaments connecting these two duplicate systems. The cosmic version encompasses these two heart systems and nests them within it. WHEN THE TWO HEARTS BEAT AS ONE, SO THE GREATER UNIVERSAL HEART RESPONDS." (THR/Maia)



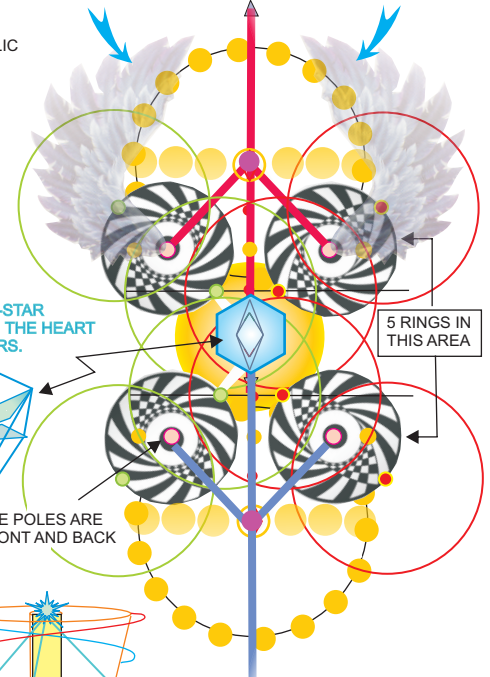
DIADEM: ATON-CENTERS CREATE STAR-BIRDS IN ARKS CODE THE STAR-BIRD BELT AS THE "FALCON OF ANDORA."

TOR TARUM RING OF 18 POLES, OFTEN AUGMENTED WITH A 28 POLE RING.

"TOR TARUM":
TOR: BELL.
TARUM: TO THREAD THROUGH OR CONNECT THROUGH A PATHWAY

REPRESENTATIVE "WINGS": ENERGETIC SYSTEMS AT EACH OF THE 4 POLES ABOVE AND BELOW. ONE "WING" AT EACH POLE. MEMBERS MERGING IN THE "SYNERGIC-ONE" SYNERGICALLY COMBINE WINGS AS WELL AS THEIR "ARCHIAS."

THE WINGS OFTEN APPEAR AS "FEATHERY" ENERGY FIELDS BUT WITH DEFINITE "WING" PRESENCE.



OSIRIS-REM-KEBKET BLUE-STAR "DIAMOND" (CUBE-STAR) IN THE HEART AS CENTER OF ALL CENTERS.

THESE POLES ARE IN FRONT AND BACK

5 RINGS IN THIS AREA

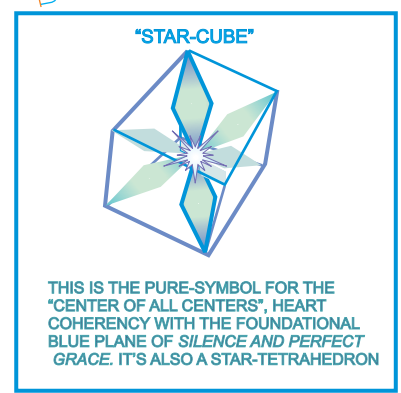
ALPHA

OMEGA ALPHA

OMEGA

DOUBLE OCTAHEDRON M-STRA DNA MOLECULE; RHOMBIC PILLAR/GATE IS THE "META-MOLECULE" TEMPLATE TO THE BASIC MOLECULE.

CORE-BEAM WITH SPIRALS



THIS IS THE PURE-SYMBOL FOR THE "CENTER OF ALL CENTERS", HEART COHENERCY WITH THE FOUNDATIONAL BLUE PLANE OF SILENCE AND PERFECT GRACE. IT'S ALSO A STAR-TETRAHEDRON