

SEVERAL RUNIC SYSTEMS:

ELDER FUTHARK, PROTO-NORSE: 2ND-8TH c.
 ANGLO-FRISIAN, ANGLOSAXON RUNES: 5TH-11TH c

"RUNEWEAVING" by CHRISTINE HAYES (MAIA NARTOOMID) C: 1985
 INTERPRETATIONS by "LINDANE" (INNERPLANES ORACLE)



THE "HOOKED-X" IS A MYSTERIOUS RUNE LITTLE UNDERSTOOD.

THE X-CUP SYSTEM SHOWS INDICATIONS THAT IT IS A MAJOR NEW ADD-ON TO THE ARKS, DIADEM, WINGED ARCHIA, ET AL. ...CAN "CLONE" AND ORIENT IN ALL DIRECTIONS IN BOTH SPACE AND META-SPACE. THE INNER STAR-TETRA "HOLY OF HOLIES"

THE **HOOKED-X (ESHA-AB-ANAN)** ACTS AS A HYPER-LINK OR "BOOKMARK" ACCESSING THE GREATER AND SUPRA-AKASHIC RECORDS OR "HALLS OF AMENITI" WHEN TRIGGERED BY A PERSON OR GROUP THAT CAN READ THE AKASHIC AT THAT LEVEL. ("OPERATORS" WOULD HAVE BEEN TRAINED IN RESHEL DYNAMICS.) IT'S LIKELY THAT A SPECIFIC X-GRAM WOULD HAVE ITS OWN CODES LOADING ITS OWN AKASHIC TRANSMISSION.

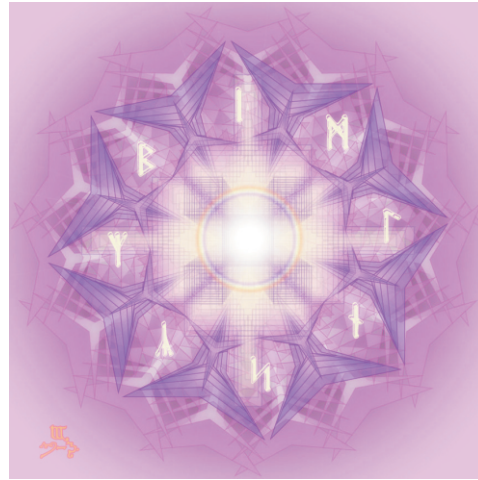
BERKANA: GROWTH
 BEORC: BIRCH
 BERKANAN: BIRCH

ALGIZ: PROTECTION
 EOLXCZ: ELK-SEDGE
 ALGIZ: ELK(?)

(NONE)
 KALC: CHALICE
 (NONE)

(NOTE THAT KALC AND ALGIZ ARE BOTH STAR-BIRD GRIDS.)

ISA: STANDSTILL
 IS: ICE
 ISAZ: ICE



MANNAZ: THE SELF
 MAN: MAN
 MANNAZ: MAN

LAGUZ: FLOW
 LAGU: LAKE
 LAGUZ: WATER, LAKE

NAUTHIZ: CONSTRAINT
 NYD: NEED
 NAUDIZ: NEED

SHORT LINE-EXCERPTS FROM "RUNEWEAVING":

THE LAW

ISA: STANDSTILL

ISA is the solitary sentinel, his vigilance a surrender to the will of the Divine who commands the theatre and determines the destinies therein.

SOWELU: WHOLENESS

To the initiated all substance, form and space is know to vibrate within us. The honeybee makes of the initiate a comb, following the chambers with the energy of the sun and filling the soul with nectar of the flowers turned golden and sweet. As suns of the Sun we, the Living Circle, shine our Light into darkened places where the eclipses of men cast long shadows.

BERKANA: GROWTH (F)

Mannaz the rune of the Self consumed with form, given earthly substance through order and self-rule... speaks in the sea wind... must find completeness in that knowledge before we can know emancipation from the draft of Time.

NAUTHIZ: CONSTRAINT (M)

The Fish of Sorrow is NAUTHIZ. It is the sign of limitations brought about through the soul's need to restore balance among the many turned faces of the dragon. ...Th Law of Constrains is submerged in the final lesson of Strength for both are proclamation that Light survives the darkest hour...

ALGIZ: PROTECTION (F)

The safe harbor is ALGIZ, the rune of perspective from which the mystic surveys the terrain and plans his course of action. Unto each age there is given a service to perform, to the initiate so a duty is ordained. Whosoever meets the challenge of his soul with forethought and control of emotion is given the protection of Spirit for he is fulfilling that which has been entrusted unto him to accomplish in the name of the fold.

THE SPIRIT

I am ISA, the wolf of the winter watch... The ice maiden has descended upon the Land and my heart too is buried in frozen earth. ...still I don not desert my watch for I am the signal of new life who will break a call upon the winds as the first green blades march upward to the piping of spring and the river flows again to the sea.

SOWELU as a fire letter from the heat of Thor's forge empower me with thy strength and light. From thy hive is engendered all life. ...I hear thy song in the waterfall and my heart beats like captive doves against my breast. ...bive me the key that I may free the spirit within me to nest in the bosom of life.

I am the sentinel of the forest. ...From my throat I pace Time, my rhythm is the rhythm of the Universe. ...I become one with the urgins of substance as it is freed from randomness to seek its true structure among the links of life.

I am the minnow composed in light. I am the pattern of my universe, the shadow, the dark, the webbed fingers of light that silken my breathing world. ...The ocean is no more than the drops of water it contains, yet within those drops is mirrored the World.

The Elk halts his feeding to survey the land, he sees what passes, he knows what is to come. ... As one who stands initiated before the throne of the Goddess, I am at peace with the resolution of spaces, the capture of Time in the nets of the stars and the judgment of Gods beyond the threshold.

SOWELU: WHOLENESS
 SIZEL: SUN
 (NONE)

THE RIDDLE

(This is the whole riddle for each.)

When the winter spell is on us, spring's sweet memory doth haunt us. Yet when we court the maiden spring we find that winter bears the ring.

I am shadow, thouart light, I am rooted and thou art flight. Twine with me thy rays of sun and together will we be One.

Dragons battle in the night, one is Darkness, one is Light. From their midst a ship doth sail, past the barrier of the Vale.

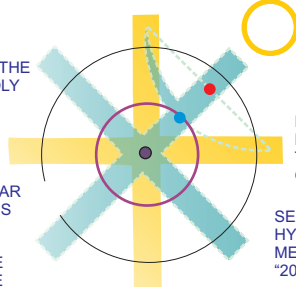
Circle of Dark, Circle of Light, My soul is the flame from which both take their right.

Amidst the world I am at peace with all those things which never cease. I stand apart yet still abide with rumbling earth and ocean tide.

TEMPLES OF THE EMERALD MAR (TEMPLA MAR) FORMAT

N DOOR: HIGHER HEAVEN, HALL OF PROCESSION: HOLDING POSITION FOR DWELLER-STAR: MAZURIEL

NW: PATH OF THE MOTHER: DIVINE SHEKINAH ENTERS THE TEMPLE VIA THE HOLY OF HOLIES.



NE HEEL-STONE STREAM INFO WITH SOURCE TO AND FROM EARTH.

E-W ASCENDING AND DESCENDING RANNA TIME WAVE. HORIZON OF THOTH.

SW: CREATION PILLAR FOR THE SOLARIANS (SHEPHERDS): FOUNDATION OF THE DIVINE TEMPLE FORMATION OF THE 1ST CONTINUUM.

SE: TREE OF KNOWLEDGE; HYPOBOREAN EPOCH MERGES WITH FALL FACTOR, "20-CYCLE" CONTINUUM

S DOOR: LOWER HEAVEN, HALL OF PROCESSION: SIDHE, NOACHAIN; HOLDING POSITION FOR DWELLER STAR: THETA DRACONIS

NOTES:

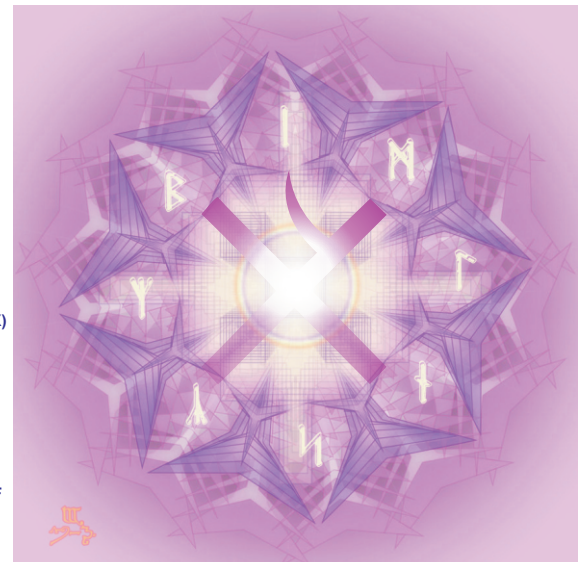
TEMPLA MAR FORMAT IS A GOOD TEMPLATE

ESHA AB-ANAN (HOOKED-X) ADDED TO GENERATE THE CHALICE IN KALC RUNE (A STAR-BIRD ARK SYSTEM).

15 OUTER SYSTEMS

4 ARKS IN THE +-CROSS ARMS (16)

INFINITE PROGRESSION OF ARKS IN THE X-CROSS, SYNTHESIZING THE INNER 4-SQUARE.



OPPOSITES ARE COMPLEMENTARY FEMININE BOTH MASCULINE