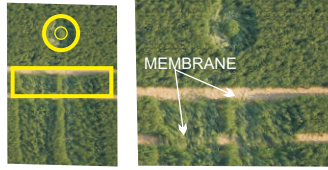


**ALTON BARNES HORSE MATRIX NEW AUGMENTATION (2011)**

THIS "WAVE-SERPENT" FORMATION, AT THE WILTON WINDMILL AMPLIFIED THE 2010 GRID START WITH THIS YEAR'S AUGMENTATION OF THE NEW AND MAJOR GRID. THIS ACCESSES THE HA-REEM MEMBRANE GENERATED BY PHYSICAL LIGHT GROUPS UNDER HIERARCHICAL SUPERVISION 3 WEEKS PRIOR TO THE FORMATIONS.



ALIGNS ON NORTH TANGENT OF SILBURY HILL WITH AN "L-SHIFT" TO THE CENTER OF THE HILL



AVEBURY: RESH POLE FOR THE ALIKAR GRID, NOW EXPANDING (2008) TO BE THE HUGE NEW "SAR-HANOK PYRIETHUM" TEMPLE INCLUDING THE EUROPEAN RIGHT FORE-BRAIN, AND MUCH OF THE ATLANTIC.



(SOUL OF TEMPLA MAR: "TEMPLES OF THE EMERALD SEA")



INTERPRETED AS 2 TETRATRYON SIGEL SPHERES DEFINING A TELEPLANE SUPPORTING A METATRONIC AND ORITRONIC UNIVERSE COUPLET, EACH WORKING THE BASIC 3-UNIVERSE MODEL FOR THE 20-CYCLE NEW-RACE/UNIVERSE PROJECT. THE BARS UNDER THE SEED-DOTS ARE THE TELEPLANE. THE RECTANGLES IN THE SACRED-GAP ARE NOACH-ARKS RESONANT WITH THE SIGEL FIELDS. **OPERATIVE IN/AS THE "TEMPLA MAR."**



THESE 2 SPHERES ARE APPARENTLY RESONANT WITH THE TWO CRYSTALEX "MOTHER CRYSTALS" LINKING WITH THE HA'REEM DIVINE MEMBRANE. THE TWO RESPOND TO THE 3RD, SYNTHESIS. ONE IS "HARD CODED", THE OTHER IS SOFT CODED, MALE AND FEMALE. THE LARGER SPHERE IS THE DIVINE HA'REEM MEMBRANE ACCESS FIELD. THIS IS BEYOND MATTER AND ANTI-MATTER AND BEYOND INDIVIDUALIZATION IN THE HIGHEST LEVELS OF THE 3 REALMS.



THE 2ND PHASE ADDITION ON THE 30TH ALSO HAD THE ABOVE FORMATION INSTALLED IN THE SAME DATE.

**THIS SYSTEM INTEGRATED WITH THE "8-8-8" GRID, INVOLVING A NUMBER OF FORMATIONS IN 2008 CREATING NEW GRIDS FEEDING GLASTONBURY AND THE ROSE-LINE BETWEEN THURSO AND SAN SEBASTIAN, ALSO THE ALIKAR GRID.**

**PRESENT OPERATIVE THEORY USING METATRONIC "RESHEL" SYSTEMS:**

THIS FORMATION IS CONSTRUED TO BE A TORUS' "TELEDISK" IN THE TORUS MODE OF THE "FLASHING UNIVERSE." THERE ARE 8 NEW "FLAME GEOMETRIES" (MAJOR CREATION MATRICES FROM DIVINE SOURCE DIRECT TO THE SUPRA/GREATER AKASHIC RECORDS) THAT ARE BEGINNING AN IMPLSION IN THE "BLUE-HOLE" TORUS CENTER WHERE THE SMALL LESS WELL DEFINED SPHERE IS THIS EARTH/VENUS (OR POSSIBLY THIS CONTINUUM FOCUS FOR OUR NEW STATE) LINKING INTO THE BLUE-HOLE BY USE OF THE COMBINATION OF IMPLoding RHOMBIC "EYE OF RA" SYSTEMS. THIS IS STRONGLY SUGGESTED BY THE GRID GEOMETRY AND SEVERAL SEASONS OF FORMATIONS WORKING THE EMERGENT TEMPLE SYSTEMS.

THE 3 RINGS WOULD THEN REPRESENT THE 3 SECTIONS OF THE PYRIETHUM TEMPLE THAT COMBINES THE 4 BASIC TEMPLES UNIFYING FOR THE "LP-40" TIME TRANSITION ("ASCENSION").



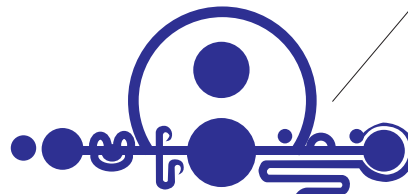
SECOND PHASE: 30 MAY, 2011, ADDED THE EXECUTIVE SYSTEMS



FIRST PHASE: 28 MAY, 2011, SANCTUARY NEAR SILBURY HILL

**PHI-SQUARED RHOMBUS "L" GATE**

**THIS PHI-SQUARED RHOMBIC "L-GATE" INTERFACES THE MAIN ALTON BARNES MATRIX WITH AVEBURY AS THE RESH POLE OF THE ALIKAR GRID (NOW THE CENTRAL PTAH HOLD CHAMBER OF THE NEW PLANETARY "SAR-HANOK PYRIETHUM" TEMPLE CREATED WITH THE 2010 FORMATIONS AND NOW REACTIVATED AND RESPONDING TO THE NEW "ZENHIDRON CRYSTALLEX TRANSMISSION" DYNAMICS ALREADY LOADING NEW "PRIMAL FLAME GEOMETRIES" FROM THE HA-REEM MEMBRANE.**



SANCTUARY NEAR AVEBURY, 1 JULY 2008

USES "L" GATE FUNCTION, AS THE CENTER OF THE RHOMBUS, TO INTEGRATE PRELIMINARY CODES INTO THE 8-8-8 GRID, ALSO USES LATER HUR'ATON AND "CETUS" FORMATIONS. SILBURY HILL SUPPORT FOR AVEBURY, USES THE ALTON BARNES MATRIX.

8-08-08 FIRST DAY OF BEIJING OLYMPICS AND CREATION OF LEY TO THE GULF OF MEXICO FROM ANGKOR WAY STAR FIELDS. CREATES KEY INITIAL GRIDS TO GLASTONBURY AND ROSE-LINE.

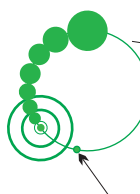
ALTON BARNES WHITE HORSE MATRIX, MAIN SUPPORT SYSTEM FOR AVEBURY... SAFE HIGH ENERGY AREA FOR MAX GRID LINKS. BODY OF HORSE IS AN ARK.

"CHAMBER OF THE SON" IN THE RESHEL PYRAMID.

COMPLETION OF THE 2008 OLYMPICS (SPECIAL REFERENCE TO CLOSING CEREMONY) "BIRD'S NEST" IN CENTER

**FORMATIONS NOT TO SCALE BUT CENTERS ARE ACCURATE.**

CENTER OF "2 OWLS" TRIANGLE, HORSE APEX



THIS KEY SMALL DISK APPEARS TO BE PARTIAL (NOT CLEAR)

THE 3 FORMATIONS ON THIS AXIS COMBINE WITH SEVERAL NORTHERN FORMATIONS TO MANAGE PRIMARY CODING FEEDING INTO THE ALTON BARNES HORSE.

THIS IS AN "L-GATE" (GOLDEN RATIO RHOMBUS) SYSTEM FOR BEST CONNECTION WITH OTHER CONTINUA, DIMENSIONS, EVENTS, ETC. TWO ARE CONNECTED HERE BY THEIR APICES.