

HUR'ATON Formation: UNIVERSE CREATOR SCHEMATIC.

"ANTENNA" OSCILLATES AND VIBRATES AS ITS "STICKY" SURFACE PICKS UP "PARTICLES" OF COSMIC INFORMATION. THIS THEN IS TRANSMITTED TO THE "NEURON SPHERES" BEHIND THE EYES IN THE HEAD (3 ENNEAD RINGS)



MAZURIEL (CENTER) AND ALL THE CENTRAL SUNS. SACRED HEART (MANIFEST):

(EXAMPLE) TEAM PERCEPTIONS TRACKING THE 5TH PATH: WILL VARY WITH INSTANCE:

THRESHOLD, RECALIBRATES WHOLE BODY MOLECULAR STRUCTURE TO PROCEED ON THIS PATH. FLAT FORM OF ENERGETICS, AS A TELEPLANE. MUST ESTABLISH THE INTENTION NOW (SO CODES CAN FORM ON PATH). A UNIVERSAL GATE.

DECLARED INTENTION: "TO INVESTIGATE THE PATH OF CREATION OF THE NEW RACE AND NEW EARTH-STAR USING THE ARKS."

BODIES FORM AS CONES; VERY HIGH FREQUENCY SOUND BEYOND RANGE OF SENSING, MORE AS KNOWING. CONE AS AN AMPLIFIER.

INSIDE FIRE (FEARLESS FLAME) HIGH CONSCIOUSNESS OF FLAME, ALIVE, VAST, INSIDE A CENTRAL SUN (NOT USUAL SOLAR BEING) HOW PLANETS CAN BE WITHIN THEIR HOST SUN. HOW SUNS GENERATE.

VERY DEEP COBALT BLUE PERMEATES WHOLE SELF. LIFE ESSENCE. CENTER OF BLUE HOLE.

SENSATION VERY DRY (THROAT, MOUTH). EMOTIONAL, SOME FEAR. POINT OF KARMIC-DHARMIC DECISION FOR SOUL PATH (BEEN HERE BEFORE).

BEFORE THE L-SHIFT, BODIES DON'T EXIST, NO SELF, JUST AWARENESS. EMBRYONIC, FORESHADOWS FORM IN A VAGUE LIQUID STATE. CLEAR TO DO THE L-SHIFT.

"STINGER" A POOR WORD; USE "TRIDENT" (FOR NOW) AS USED BY THOTHORRA.

ONE SYSTEM OF THOUSANDS: INFINITE POTENTIAL: (DIVINE UNITY STATE: "PRIEST/PRIESTESS")

- 1ST CONTINUUM)
- 2ND CONTINUUM)
- 3RD CONTINUUM)

RESULTANT: HEART OF SYSTEM

"DOMINION" STATE: NEW EARTH STAR, NEW RACE, 6TH C-S: MAZURIEL

(NOTE IMPORTANT OFFSET IN AXIS.)

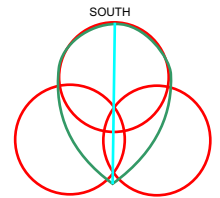
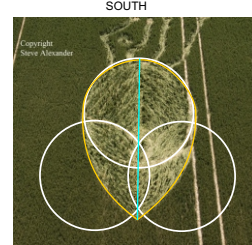
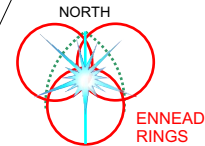
STATE OF BEING, ACTION: SOLARIAN, METATRON (& OFFICE OF THE CHRIST), ENNEAD, MICHAEL MANDATE, AMYTHYST THRONE, ETC. RELATING TO THE 20-CYCLE PROJECT.

NOTE OFFSET FROM CENTER, IMPLYING THAT THE CENTRAL SUN LINK SYSTEM IS ADJUSTABLE WITHIN THE 90 deg ANGLE (CONE). THERE IS A SECONDARY OFFSET (CONE) CENTERED IN THE MIDDLE SPHERE.

ANTENNA INTERFACE, PROCESSOR.

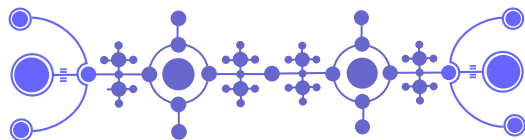
HEX EYE MATRIX AT CENTER OF THE L-SHIFT, INTEGRATION.

SPECIALIZED ARKS/TEMPLES PROCESSING 20-CYCLES OR ANYTHING ELSE BEING CREATED.

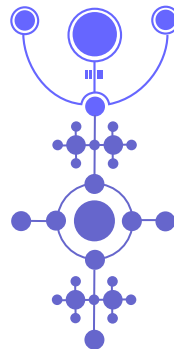


ThothHorRa: There is no "gestation" or "birth" through a body-vessel in the New Earth / Numis'OM. All "birth" functions through a building of energies along specific grid points, manifesting as a whole merkabah. One can then choose a "form" from that energy field via thought-as-desire. **The New Earth Arks are sensitive to Lotus Loci transformations in the Pure Gem Body which as a whole Merkabah manifests the grid for the individual Pure Gem bodies. The Lotus Loci creates the whole patterning necessary for LIFE in the New Earth. The Arks carry out the actual positioning of the nodes with the bio-chemical formations of the Loci.**

THE BAR-EN UNIVERSAL CONNECTOR DYNAMIC RESONANT WITH THE CENTRAL SUNS.

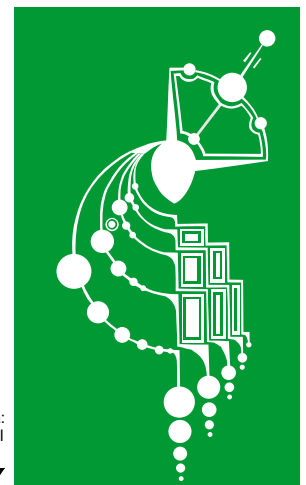


TWO UNITS LINKED: CONNECTORS AT BOTH ENDS. INFINITE LENGTH. FILLS ALL SPACE. SUPPORTS THE HUR'ATON.



BAR-EN FORMATION LINKED WITH URMAGA PROCESSES IN MAY, 2009, CHARLOTTESVILLE, VA.

"BAR-EN: HEAVEN AND EARTH MEETING." Its larger purpose is to create a sacred know or looping (intersecting) of energy between Earth and Celestial wave forms. (ThothHorRa/Maia Mallika)



72 deg Penta-Spear (Dovine Merkaba: HOLOS universal seeding system).

MILK HILL, 21-22 JUNE 2-INCREMENT FORMATION: PART OF THE 3-FORMATION, OLYMPICS/BEIJING LEY AND LARGE URMAGA/MESSIANIC GRID PROGRAMS. USES SAME SYSTEMS EMPLOYED IN NEW-ARK GENERATION LIGHT OPS, THIS ONE LINKED TO JACKSON HOLE EVENT ON DATE OF FORMATION.